

# AIRPORT DIAGRAM

AL-72 (FAA)

CASPER/NATRONA COUNTY INTL (CPR)  
CASPER, WYOMING

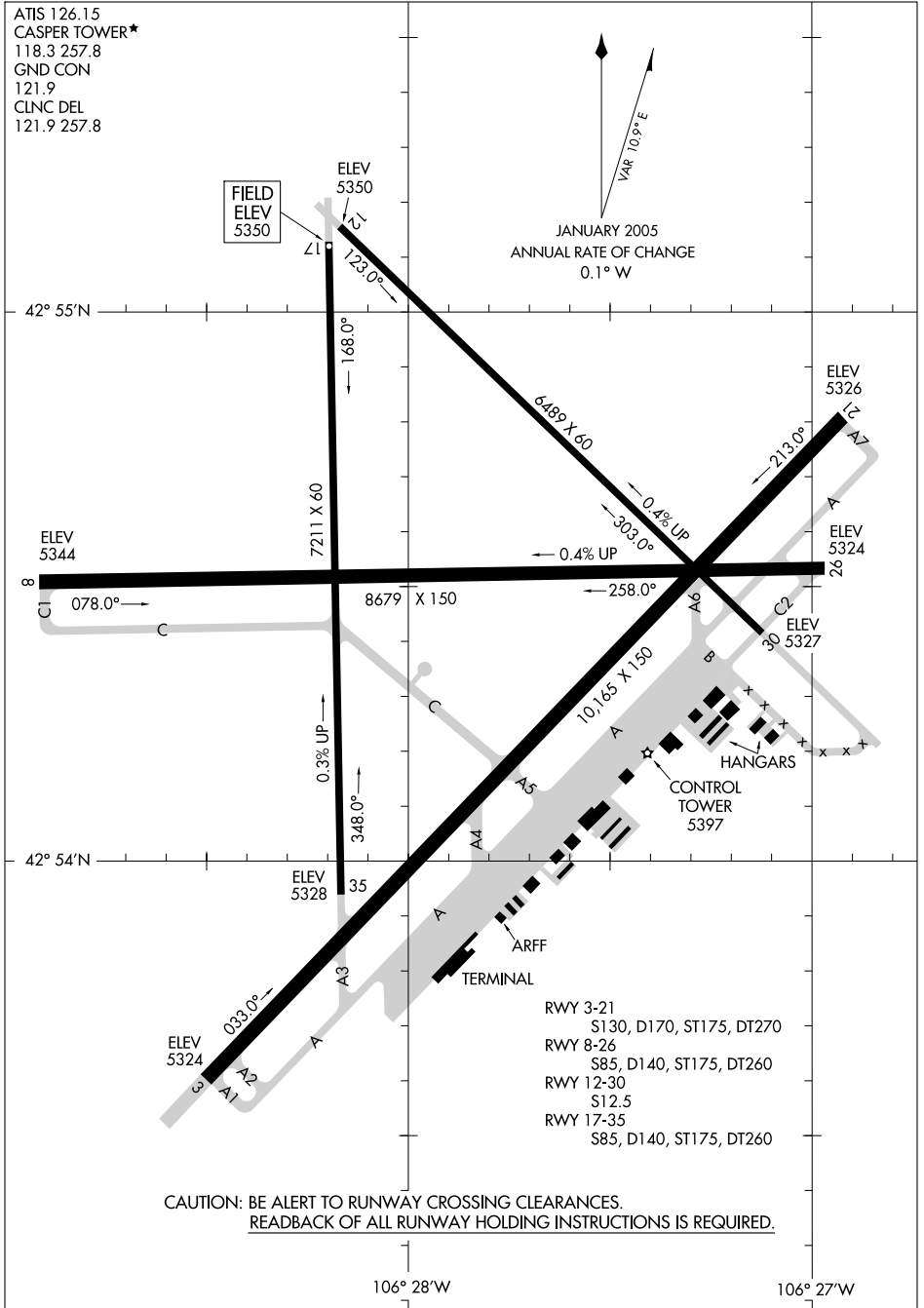
ATIS 126.15  
CASPER TOWER\*  
118.3 257.8  
GND CON  
121.9  
CLNC DEL  
121.9 257.8

FIELD  
ELEV  
5350

JANUARY 2005  
ANNUAL RATE OF CHANGE  
0.1° W  
VAR 10.9° E

NW-1, 03 JUL 2008 to 31 JUL 2008

NW-1, 03 JUL 2008 to 31 JUL 2008



CAUTION: BE ALERT TO RUNWAY CROSSING CLEARANCES.  
READBACK OF ALL RUNWAY HOLDING INSTRUCTIONS IS REQUIRED.

# AIRPORT DIAGRAM

CASPER, WYOMING  
CASPER/NATRONA COUNTY INTL (CPR)